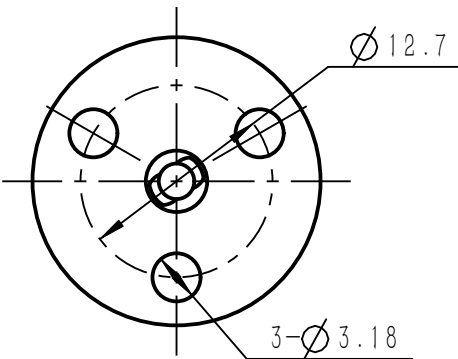
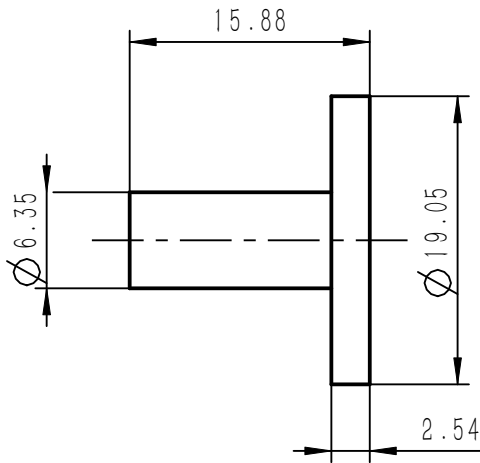
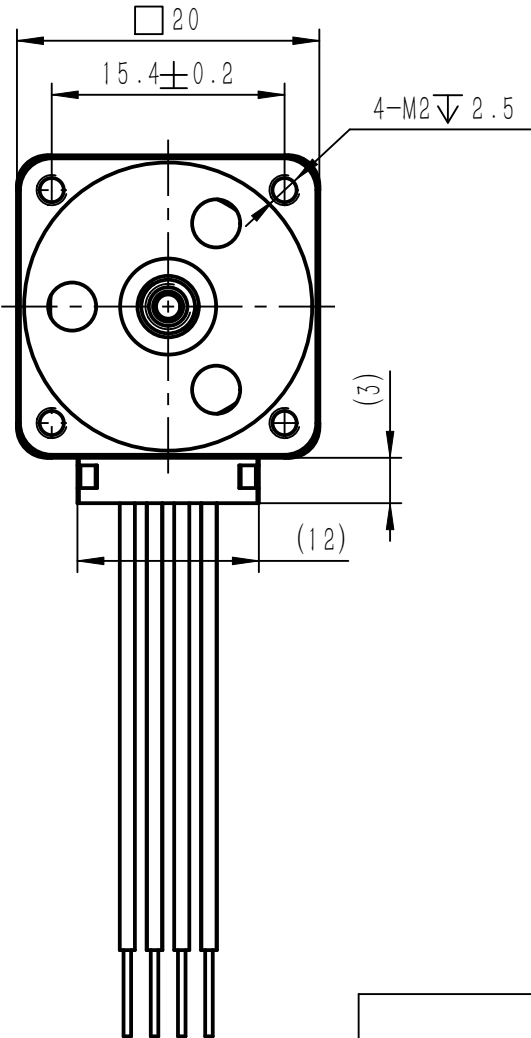
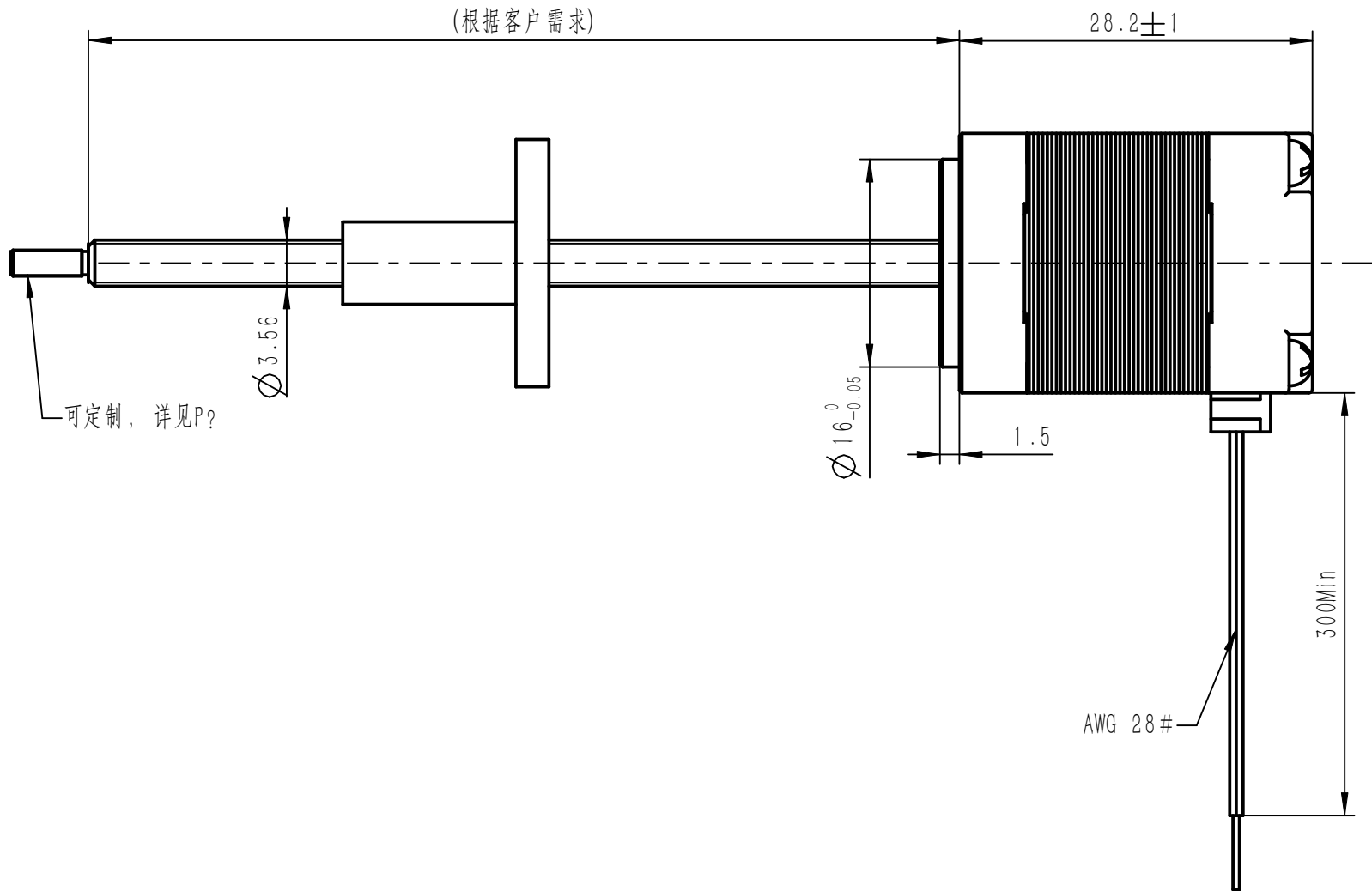


REVISIONS			
REV.	DESCRIPTION	DATE	ECO. NO.
-	Release for production	23-Jun-21	

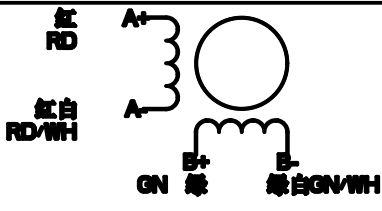


规格说明Specification	
工作电压 Operating Voltage	??? V
每相电阻 Resistance Per Phase	??? OHMS±10%
绝缘电阻 Insulation Resistance	20M OHMS
功耗 Power Consumption	??? W
最小推力 Minimum Force(300PPS)	??? N
导程 Lead	??? mm
步长 Step	??? mm
步距角 Step Angle	1.8°
额定电流 Rated Current	??? A
工作温度 Operating Temperature	-40° to +55°
环境温度 Storage Temperature	-40° to +100°
其它 Others	

客 户
Customer

Wiring Diagram 接线图

Exciting Sequence 励磁顺序



伸出	→				
A+	+	-	-	+	
A-	-	+	+	-	
B+	+	+	-	-	
B-	-	-	+	+	
缩回	←				

STANDARD BLOCK TOLERANCES:UNLESS OTHERWISE SPECIFIED

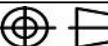
		INCH		MM
DECIMALS:	X	±.020	X	±0.38
DECIMALS:	X.X	±.015	X.X	±0.25
DECIMALS:	X.XX	±.010	X.XX	±0.13
DECIMALS:	X.XXX	±.005	X.XXX	±0.013
DECIMALS:	X.XXXX	±.0005		
ANGLES:		±2°		

Drawn By

SY

Date

23-Jun-21



Unit mm

常州惠勒电机有限公司
Changzhou Wheeler Motor CO., LTD
常州市新北区新桥工业园区镜湖路28号
No.28,Jinghu Road,Xinqiao Industrial Park,
Xinbei District,Changzhou,213125
TEL:0519-83252878, 85102562
FAX:0519-83252220
EMAIL:info@wheeler.com.cn
www.wheeler.com.cn

Scale: A4

Rev: -

Sheet 1 of 1

WHEELER™

常州惠勒电机有限公司

DWG.NO.

21EA4X-X-XXX